



Mart-1/Melan-A mouse mAb(ABT-Mart1)

Catalog No	YP-Ab-15463
Isotype	IgG
Reactivity	Human; Predict react with Mouse, Rat
Applications	IHC;IF
Gene Name	MLANA MART1
Protein Name	Mart-1/Melan-A
Immunogen	Synthesized peptide derived from human Mart-1/Melan-A
Specificity	This antibody detects endogenous levels of human Mart-1/Melan-A. Heat-induced epitope retrieval (HIER) TRIS-EDTA of pH9.0 was highly recommended as antigen repair method in paraffin section
Formulation	Liquid in PBS containing 50% glycerol, 0.5% BSA and 0.02% sodium azide.
Source	Mouse, Monoclonal/IgG2b, Kappa
Purification	The antibody was affinity-purified from mouse ascites by affinity-chromatography using specific immunogen.
Dilution	IHC-p 1:300-500. IF 1:50-200
Concentration	1 mg/ml
Purity	≥90%
Storage Stability	-20°C/1 year
Synonyms	Melanoma antigen recognized by T-cells 1 (MART-1;Antigen LB39-AA;Antigen SK29-AA;Protein Melan-A)
Observed Band	
Cell Pathway	Endoplasmic reticulum membrane; Single-pass type III membrane protein. Golgi apparatus. Golgi apparatus, trans-Golgi network membrane. Melanosome. Also found in small vesicles and tubules dispersed over the entire cytoplasm. A small fraction of the protein is inserted into the membrane in an inverted orientation. Inversion of membrane topology results in the relocalization of the protein from a predominant Golgi/post-Golgi area to the endoplasmic reticulum. Melanoma cells expressing the protein with an inverted membrane topology are more effectively recognized by specific cytolytic T-lymphocytes than those expressing the protein in its native membrane orientation.
Tissue Specificity	Expression is restricted to melanoma and melanocyte cell lines and retina.
Function	tissue specificity:Expression is restricted to melanoma and melanocyte cell lines and retina.,
Background	tissue specificity:Expression is restricted to melanoma and melanocyte cell lines and retina.,

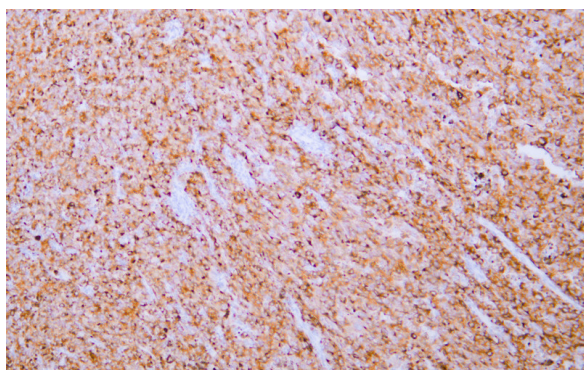
**matters needing attention**

Avoid repeated freezing and thawing!

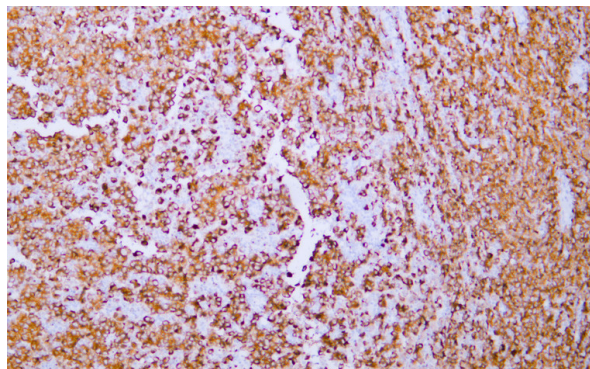
Usage suggestions

This product can be used in immunological reaction related experiments. For more information, please consult technical personnel.

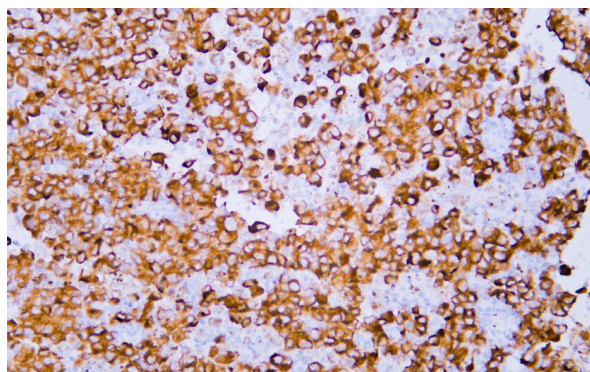
Products Images



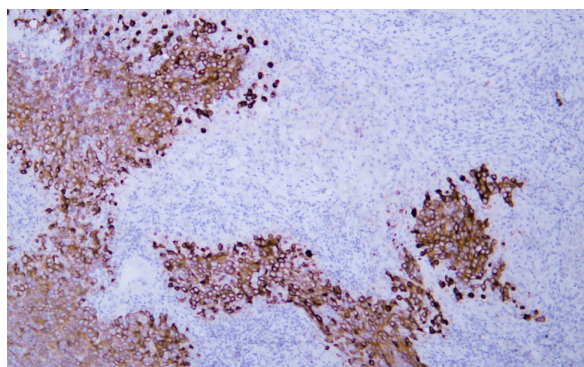
Human malignant mesothelioma tissue was stained with Anti-Melan-A (ABT-Mart1) Antibody



Human malignant mesothelioma tissue was stained with Anti-Melan-A (ABT-Mart1) Antibody



Human malignant mesothelioma tissue was stained with Anti-Melan-A (ABT-Mart1) Antibody



Human malignant mesothelioma tissue was stained with Anti-Melan-A (ABT-Mart1) Antibody